



next to normal

MUSIC BY
TOM KITT

BOOK & LYRICS BY
BRIAN YORKEY

DIRECTED BY MATTHEW McCRAY
MUSIC DIRECTION BY STEPHEN HULSEY

January 28 - February 27, 2022
on the Cripe Stage

CHANCE
THEATER @ Bette Aitken theater arts Center

(888) 455-4212
ChanceTheater.com
5522 E. LA PALMA AVE. ANAHEIM



CAST

Diana	Jocelyn A. Brown*
Dan	Tym Brown
Gabe	Jaylen Baham
Natalie	Angie Chavez
Henry	Jared Machado
Dr. Madden	Ron Hastings
Natalie Understudy	Jessica James

PRODUCTION TEAM

Director	Matthew McCray
Music Director/Piano/Conductor	Stephen Hulsey
Scenic Designer	Joe Holbrook
Lighting Designer	Matt Schleicher
Costume Designer	Christina Perez
Sound Designer	Ryan Brodtkin
Stage Manager/Booth Operator	Wade Williamson*
Dramaturg	Sophie Hall Cripe
Assistant Director	Miguel Cardenas*
FOH Mix	Hannah Jepsen
Load-In Crew	Andrea Alday, Trevor Calyton, Gary DeVault, Hannah Jepsen, Sam Moss, Chris Powers, Marc Sanford*, Chase Thayer, and Jennie White
Master Electrician	Gary DeVault
Scenic Painters	Kyle Baumbusch, Danthi Tran
Musicians	Sho Fujieda, <i>Drums/Percussion</i> Jacob Gonzalez, <i>Guitars</i> Jimmy Beall, <i>Bass</i>

PRODUCTION SPONSORS

Executive Producers	Linda & Tod White
Associate Producers	Susan Bowman & Freddie Greenfield
.....	Laurie Smits Staude
2022 Season Producers	Bette & Wylie Aitken
2022 Associate Season Producers..	The Family of Mary Kay Fyda-Mar



The Director is a Member of the
STAGE DIRECTORS AND CHOREOGRAPHERS
SOCIETY, a national theatrical labor union.

Original Broadway Production Produced by David Stone,
James L. Nederlander, Barbara Whitman, Patrick Catullo and Second Stage Theatre.

New York Premiere Produced by Second Stage Theatre, New York. February 2008
Carole Rothman, Artistic Director Ellen Richard, Executive Director

"Next to Normal" was subsequently produced by Arena Stage in November 2008.

Developed at Village Theatre, Issaquah, WA (Robb Hunt, Executive Producer, Steve Tomkins, Artistic Director).

An earlier version was presented in the 2005 New York Musical Theatre Festival.

Support for the development of "Next to Normal" was provided by the Jonathan Larson Foundation.

"Next to Normal" is presented through special arrangement with Music Theatre International (MTI). All authorized performance materials are also supplied by MTI. www.MTIshows.com.

Any video and/or audio recording of this production is strictly prohibited.

* Chance Theater Resident Artist



The cast of *Next to Normal* -- Jaylen Baham, Ron Hastings, Jocelyn A. Brown, Tym Brown, Angie Chavez, and Jared Machado -- at their first read/sing-thru of the show. Photo by Casey Long.

THOUGHTS ON *NEXT TO NORMAL*

It's so wonderful to return to Chance Theater with *Next to Normal*. This is the third time I've directed a play that explores the subject of mental illness. While researching for these productions I benefitted from friends and colleagues who were willing to share their personal experiences rebuilding their mental health. It helped me appreciate, once again, my responsibility as a director when engaging with complex subject matter.

a decade ago. The incredible lyrics and music, the moving book, the beautiful story... some musicals have songs that stick in your head and get your toes tapping. This show does all of that and more.

Thank you for being here and helping us "bring some light."

-- Matthew McCray, director

Next to Normal is as stunning as I remember when I saw the original production over

CAST



JAYLEN BAHAM (GABE) is thrilled to be making his Chance Theater debut with one of his favorite musicals! Some of his past credits include Benny (*In the Heights*), Seymour (*Little Shop of Horrors*), Jack (*Into the Woods*) and Sweaty Eddie (*Sister Act*). He would like to thank his friends and family for their constant and unwavering love and support, and he would like to thank the Chance creative team for giving him this wonderful opportunity. Enjoy the show!



JOCELYN A. BROWN (DIANA) has served as the Chance Theater's Associate Artistic Director since 2011 and a Chance Resident Artist since 2001. Some of her favorite acting credits include portraying the Witch in *Into The Woods* (*Back Stage West* Critic's Pick), Cathy in *The Last 5 Years* (*Back Stage West* Garland Award Honorable Mention for Best Actor), Leigh Fondakowski in *The Laramie Project & Ten Years Later* (Ovation Recommended), Ann in *Goodnight Children Everywhere* (OC Weekly Award for Best Female Lead Performance), and Jo in *Little Women*. Directing highlights include: *Lizzie, The Musical* (Ovation Award Winner: Best Musical – Intimate Theatre, Ovation nomination for Best Direction of a Musical, OC Weekly Best of OC 2019 – Best Musical Production), *Good People* (Ovation Recommended), *in a word* (Best in OC by *The Orange Curtain Review*), *The Big Meal, Never In My Lifetime* (*Back Stage* Critic's Pick), *The Cherry Orchard* (OC Weekly nomination for Best Direction), *Big Love*, and *In The Next Room (or the vibrator play)*. Jocelyn teaches at Laguna Hills High School; she was an honoree for the California League of High Schools "Teacher of the Year" in 2012 for Orange County. M.Ed: Vanguard University, B.A. & B.S.: University of California San Diego.

** Sponsored by Rachelle Menaker & Eddie Schuller



TYM BROWN (DAN), an AMDA grad, hails from Milwaukee, Wisconsin and makes his Chance Theater debut. He has toured professionally as both an actor and singer. Some of his credits include Benny in *Rent*, Walter Lee Younger in *A Raisin In The Sun*, Curtis in *Sister Act*, Aistulf in *Pope Joan*, Dan in *Return*, Vox Lumiere's national tours of *Phantom* and *Metropolis*, opening act for Smokey Robinson, and many shows with 3DT, DOMA, MTW and other companies. Tym most recently arranged shows at Disneyland's Festival of Holidays and Knott's Merry Farm. He is also the co-writer of the original musical, *Reunion of the Bells*. "I'm totally fine with not being normal. It's more fun on the other side." @tymcb



ANGIE CHAVEZ (NATALIE) is ecstatic to make her debut at Chance Theater as Natalie Goodman! *Next to Normal* will be Angie's first live theater production since the pandemic and she couldn't be more thrilled to share the stage with such an amazing group of individuals! Her previous theater credits include Caitlyn in *Edges: A Song Cycle*, Emma in *Emma: A Pop Musical*, and Nina Rosario from *In The Heights*. Angie also had the amazing opportunity to train in New York City with Taylor Louderman, Leslie Kritzer and others with Broadway Workshop over the summer! Lastly she would love to thank her family for their endless support and a huge shoutout to Jef McClure and Kyle Puccia for always keeping her voice in shape!



RON HASTINGS (DR. MADDEN) is delighted to be back at the Chance – and back on stage, period! He last appeared here as Bruce in *Fun Home*, earning an L.A. Stage Alliance Ovation Award nomination for 'Best Actor' (*Fun Home* won 'Best Musical'). Previously, Ron appeared here as Father in *Ragtime* and Ian in *The Other Place* (also directed by Matt McCray). He just appeared as Mr. Winslow in *A Surprise for Santa* at the Candlelight Pavilion. Other recent credits include Frolo in *The Hunchback of Notre Dame*, Callahan in *Legally Blonde*, Herod in *Jesus Christ Superstar*, Toddy in *Victor/Victoria*, Harry in *Company*, and the title role in *Willy Wonka*. "The price of love is loss. But still we pay. We love anyway."



JARED MACHADO (HENRY) After two years in Arizona, playing roles in Shakespeare and Chekov, Jared is excited to be back home in Southern California and making his Chance Theater debut. His previous credits include The Prince of Morocco in *The Merchant of Venice*, Trofimov in *The Cherry Orchard*, Georg in *Spring Awakening*, and Ernie in *Sister Act*. Jared started his training at the Orange County School of the Arts (Class of '17), training under professionals such as Krysta Rodriguez, Susan Egan, Ali Stroker, and more! When he's not acting, Jared spends his time composing cinematic themes and creating new worlds as a Dungeon Master in his D&D group.



JESSICA JAMES (NATALIE UNDERSTUDY) feels so lucky to be joining the stellar cast of *Next to Normal* for her debut at the Chance! Hailing from Eden, Utah, Jess is attending Chapman University as a Sophomore and pursuing a BFA in Theatre Performance. Previous credits include the 2017 Jimmy Awards, Alice Murphy in *Bright Star*, Ariel in *The Little Mermaid*, Velma Kelly in *Chicago*, and Martha Bessell in *Spring Awakening*. She'd like to thank her best friend, her boyfriend, and her parents for their love and support.



Brian Yorkey and Tom Kitt. Source: newyorktheater.me

THE WRITERS

TOM KITT (Music) received the 2010 Pulitzer Prize for Drama as well as two Tony Awards for Best Score and Best Orchestrations for *Next to Normal*. *Next to Normal* also received the Outer Critics Circle Award for Outstanding New Score. He is also the composer of *If/Then* (Tony Nom., Outer Critics Nom.); *High Fidelity* (Broadway); *Bring it On, The Musical* (co-composer with Lin-Manuel Miranda, Broadway); *Superhero* (2nd Stage); *Disney's Freaky Friday* (Stage Production and Original Disney Channel Movie Musical); *Dave* (Arena Stage); *The Winter's Tale*, *All's Well That Ends Well*, and *Cymbeline* (The Public's NYSF); *From Up Here* and *The Madrid* (MTC); *Orphans* (Broadway) *The Retributionists* (Playwrights Horizons) and *As You Like It* (Toho Co., Japan).

BRIAN YORKEY (Book & Lyrics) received the 2010 Pulitzer Prize for Drama, as well as the 2009 Tony Award for Best Score, for *Next to Normal*. Brian was the Executive Producer and Showrunner of *13 Reasons Why* for Netflix, Paramount Television and Anonymous Content. Brian was also nominated for the Tony for Best Musical and Best Book of a Musical for *Next to Normal*, and his work on the show earned him the Outer Critics Circle Award for Best Score. He partnered again with the *Next to Normal* team on *If/Then* (Tony nominee for Best Score) starring Idina Menzel. Brian co-wrote the libretto for *The Last Ship* (Outer Critic's Nomination, with John Logan), with a score by Sting. His musical adaptation of *Freaky Friday* for Disney Theatricals enjoyed a National Tour before being adapted into a Disney Channel Original Movie.



Cast members Jocelyn A. Brown, Tym Brown, Jaylen Baham, Angie Chavez, Ron Hastings, and Jared Machado at the Design Preview Party for *Next to Normal*. Photo by Casey Long.

DRAMATURGICAL NOTE

Next to Normal began in 1998 as a ten-minute piece called *Feeling Electric*. Recent college graduates Brian Yorkey and Tom Kitt wrote it after being inspired by a segment about electroconvulsive therapy they saw on *Dateline NBC*.

Next to Normal was first produced Off-Broadway at the Second Stage Theatre in 2008. Although it won the Outer Critics Circle Award for Outstanding New Score and received Drama Desk Award nominations, the critics found the show internally confused. They said, "What is most glaringly out of sync is an impulse to jazz up the story with comic songs and glitzy production numbers."

The team decided to make major changes in both the book and score. The re-written version was given a regional theatre production at Arena Stage in November 2008 under the direction of Michael Greif and received rave reviews, with critics noting that

"comic songs and glitzy production numbers" had been replaced by songs that complemented the emotional content.

Next to Normal opened on Broadway at the Booth Theatre on April 15, 2009. It was nominated for eleven Tony Awards and won three. It also won the 2010 Pulitzer Prize for Drama. The Pulitzer Board called the show "a powerful rock musical that grapples with mental illness in a suburban family and expands the scope of subject matter for musicals."

As librettist and lyricist Brian Yorkey stated, "Exposing the stigma of mental illness is one of the reasons we wrote the show...why we pursued telling this story. We both feel that an awful lot of people try to live up to a standard of what they consider 'normal' and that actually can be as destructive as anything."

-- Sophie Hall Cripe, *Dramaturg*

PRODUCTION TEAM



RYAN BRODKIN (SOUND DESIGNER) has worked with Chance Theater on productions such as *Claudio Quest*, *A Chorus Line*, *Lysistrata Jones*, *Maple & Vine*, *Triassic Park*, *The Laramie Project*, *She Loves Me*, *In The Heights*, *Loch Ness: A New Musical*, *After The Revolution* and *Dogfight*. Ryan has also worked extensively in the L.A. area as a sound designer, including the world premiere productions of *Alceste*, *Eat The Runt*, and *Holy Ghost*. Outside of the theater, Ryan is a part-time web developer and full-time coffee addict.



SOPHIE HALL CRIPE (DRAMATURG) has a BA and MA in Speech and Theater from the University of Illinois and she taught theater at the high school level. She has also been an actor/dancer and director/choreographer. She served as Board President of the Laguna Playhouse and South Coast Repertory. She is a Member of the National Council of the American Theater and the Literary Managers and Dramaturges of America. This is Sophie's 14th play to dramaturg for the Chance. She thanks her family for their ongoing support and dedicates her work to the memory of the first actor she saw on the Chance stage... Karen Webster!



JOE HOLBROOK (SCENIC DESIGNER) has designed scenery at the Chance for *The Vandal*, *The Big Meal*, *Maple & Vine*, *Triassic Park: The Musical* and *Rooms: A Rock Romance* (Ovation Award nomination) as well as projections for *The Laramie Project* and *The Laramie Project: 10 Years Later*. As a design consultant, Joe has served as an Art Director, Draftsman, and Associate

Designer for several organizations including Walt Disney Imagineering, Disney Parks Live Entertainment, and The LA Philharmonic. Joe also teaches technical theater workshops at The Disneyland Resort in Anaheim as part of the Disney Performing Arts program. A Kennedy Center National Award Winner in Set Design, Joe continues to design scenery and projections for several theatres throughout the Orange County and LA areas where he has received multiple awards and nominations. Joe received his Master in Fine Arts in Theatrical Design & Production from Cal State Fullerton and is currently a full-time faculty member in the Visual and Performing Arts Department at Citrus College.



STEPHEN HULSEY (MUSIC DIRECTOR) Thrilled to be making his Chance debut, Stephen has served as musical director/conductor/director throughout Northern/Southern California. Past productions include, *Sweeney Todd*, *A Little Night Music*, *Into The Woods*, *Chess*, *Ragtime*, *Titanic*, *Les Miserables*, *Assassins*, *The Secret Garden*, *Little Shop of Horrors*, *Avenue Q*, *The Toxic Avenger*, *Sister Act!*, *Hedwig & the Angry Inch*, *Falsettos*, *Evil Dead: The Musical*, and *A New Brain*, to name a few. Also a performer, favorite roles include Hinckley & Czolgosz (*Assassins*), Carl Magnus (*A Little Night Music*), Gordon (*A New Brain*), Sparky & Smudge (*Forever Plaid*), Enjolras (*Les Miserables*), Floyd (*Floyd Collins*), Joseph (*Joseph & the Amazing Technicolor Dreamcoat*), Riff Raff (*Rocky Horror Show*), and Rutledge (1776).



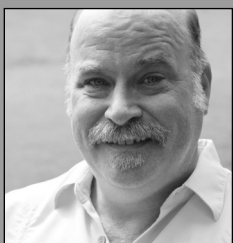
MATTHEW MCCRAY (DIRECTOR) has directed productions, workshops and concerts at Center Theatre Group, StudioSCR at South Coast Repertory, the LA Philharmonic @ Disney Concert Hall, Deaf West Theatre, Chance Theater, Lewis Family Playhouse, Theatre @ Boston Court, Muse/ique, REDCAT, Son of Semele, Circle X, Moving Arts, Rogue Machine, among others. Awards for directing include LA Drama Critics Circle and the Sage Awards, as well as nominations from the Ovation Awards and *LA Weekly Theatre Awards*. Founding Artistic Director of Son of Semele Ensemble (19 seasons and going). As a performer, credits include REDCAT, Disney, REPRISÉ!, Overtone Industries, Theatre @ Boston Court, Musical Theatre West, Shakespeare Orange County, as well as on the TV shows *Parenthood*, *New Girl*, *Will & Grace*, *Boston Legal*, and the feature *The Commission* (w/ Martin Sheen). President, Theatrical Producers League of Los Angeles. BFA, Chapman University. Member: SDC, AEA & SAG/AFTRA. @matthewmccray WEB: <http://www.matthewmccray.com>



CHRISTINA PEREZ (COSTUME DESIGNER) is very excited to be a part of this fun show! Since graduating from San Diego State University, she has worked for Long Beach Opera, The Western Stage in Salinas, PCPA Theaterfest in Santa Maria, and Orange Coast College in Costa Mesa. In addition to designing for various theatres, she is currently working towards her Masters of Fine Arts degree at California State University Fullerton. Some of Christina's design work includes *Real Women Have Curves*, *Little Shop of Horrors*, *Bugsy Malone Jr.*, and *One Flew Over the Cuckoo's Nest* at The Western Stage, *Legally Blonde* and *The Merry Widow* at Cal State Fullerton, and *In the Heights* at the Chance. Christina would like to give a BIG thank you to her amazing family for all their love and support. Without it, she would not be able to follow her bliss.



MATT SCHLEICHER (LIGHTING DESIGNER) is excited to be designing again with Chance Theater. Designs with TACFA's Broadway in the Park series include *The Little Mermaid*, *Annie*, *Disney's Beauty & The Beast*, and *Kiss Me Kate*. Designs at Chance Theater include *Claudio Quest*, *Hairspray*, and *Triassic Park* (Ovation Award for Best Musical). Other designs include the World Premiere of John Glore's *Night Fairy* at South Coast Repertory TYA Series, *Spring Awakening* at Chapman University's Waltmar Theater, *Altar Boyz* at the Celebration Theater, and *Follies*, *Urinetown* and *Jekyll & Hyde* at Cypress College. Matt has recently joined the faculty at Rio Hondo College in the Theatre Arts Department, where he is head of Technical Theatre and Design.



WADE WILLIAMSON (STAGE MANAGER) is a Chance Resident Artist. He has been active in the local Orange County theater scene for the past 30 years. He has stage managed the staged "singing" of *L.A. Vida* and the mainstage productions of *Seminar*, *Tribes*, *Violet*, and *Good People*. A graduate of Cal State Fullerton's acclaimed School of the Arts Department of Theatre & Dance, he has served as an actor, stage manager, director, technician, designer, producer, and even artistic director. He has directed plays at Modjeska Playhouse, STAGES theatre, and Vanguard Theater Ensemble.

MUSIC THEATRE INTERNATIONAL (LICENSING COMPANY) MTI is one of the world's leading theatrical licensing agencies, granting theatres from around the world the rights to perform the greatest selection of musicals from Broadway and beyond. Founded in 1952 by composer Frank Loesser and orchestrator Don Walker, MTI is a driving force in advancing musical theatre as a vibrant and engaging art form. MTI works directly with the composers, lyricists and book writers of these musicals to provide official scripts, musical materials and dynamic theatrical resources to over 70,000 professional, community and school theatres in the US and in over 60 countries worldwide. MTI is particularly dedicated to educational theatre, and has created special collections to meet the needs of various types of performers and audiences. MTI's Broadway Junior™ shows are 30- and 60-minute musicals for performance by elementary and middle school-aged performers, while MTI's School Editions are musicals annotated for performance by high school students. MTI maintains its global headquarters in New York City with additional offices in London (MTI Europe) and Melbourne (MTI Australasia).

ANNUAL FUND DONORS

Thank you to the following supporters for generously donating to Chance Theater from January 11, 2021 through January 11, 2022.

\$50,000+

Bette & Wylie Aitken • National Endowment for the Arts CARES Act • Linda & Tod White

\$25,000+

California Small Business Grant • The Family of Mary Kay Fyda-Mar • Rachelle Menaker & Eddie Schuller

\$15,000+

Katheryn Baker & Brad Feldman • Susan Bowman & Freddie Greenfield • The Capital Group Companies Charitable Foundation⁷ • Robin Preiss Glasser & Robert Berman • Elizabeth Jones • Todd & Rachel Martinez • Orange County Community Foundation • Orange County District 3 COVID-19 Arts Relief Program • Laurie Smits Staude

\$8,000+

Atlassian Community License Program • The Marc Chessen Scholarship Fund • Sophie & Larry Cripe • Google, Inc • Jennifer Ruckman & Ken Favell

\$3,500+

Ashleigh Aitken & Michael Penn • Steven R Brown • Deutsche Bank Americas Foundation • Disney Matching Gifts • Jason & Alisa Duffey • Elizabeth George Foundation • Roger Friedman • Bruce Goodrich • Dr. & Mrs. Rob & Audrey Greenfield • Nancy Johnson • David & Judy Joss • Rachel Knapp • Doris Longmead • Microsoft Azure Grant • Orange County Asperger's Support Group • Sally Ann Catering

\$2,500+

Martin & Wendy Benson • Mary Cramer • William Eatmon • Laura M. Hathaway & Matt Takahashi • Andy & Judith Lamb • Tommy & Maddy Long • Molly Mahoney & John Dominguez • Mike & Lindy Michaelis • Miracle Foundation Fund • Steve & Chris Sumpter • Kristin Yata

\$1,200+

Jean Abdalla • Anaheim Community Foundation • Diane & Chimo Arnold • The Caplin Foundation • Marnie & Victor Ceporius • David & Darlene Diem • Myra & Peter Duncan • James Finnerty • Bryce Hamilton-Bettenfeld • Gregory & Annette Heiertz • Ron & Susan Horn • Bradley Kaye • Kiwanis Club of Greater Anaheim • David & Danice Limberg • Linda Poole Maggard Family Foundation • Elizabeth & Keith McDonald • Jolene Perez • MJ Poptanich • Michael & Monika Sargent • Sue & William Shapiro • Karen Smits • Dr. & Mrs. Arthur Strauss • Target Circle • Gabrielle & Matthew Tresler • Chris & Danielle Weiler

\$600+

Matthew Black³ • Smiles4oc, Tom Rolfes, DDS and staff⁴ • California Arts

Council • Alan & Theresa Corcoran • Joseph Dale & Judy Flindt • Paula Tomei & David Emmes • Eve Fudge • Elaine & Nathan Gochman • John Goodman & Pauline Merry • Camille Goulet • Cynthia Hamilton • Nick Kremer & Susan Jundanian • Dr. Anita & Mr. Kantak • Joanne & Dennis Keith • Kroger Company • Pamela J. Lorenz, CFP • Yukiko & Keith Loritz • Jolynn & Patrick Mahoney • Guy W. Marr • Erika C. Miller & Oanh Nguyen • John & Deborah Montevideo • Joseph & Sharon Mulé • Margi & John Murray • Karen O'Hanlon & Nick DiPatrizio • Kameel Renner • Christina & Tim Rice • Frances Riggs • Michael Salimbeni • Michelle & Terry Schomburg • Maya Valenciano • Robin Walton¹ • The Yata Family Fund

\$300+

Thomas & Susan Alexander • Phyliss Alexander • Amazon Smile • Ellen Beizer • The Blaney Family • Reynolds Family Foundation • B.J. Borgen • Ryan Brodtkin • Jocelyn A. & Kirk Brown • Capital Genealogy • Georgia Davis • Alyson Day • Patricia Eatmon • Kathy & Bahram Esfahani • Anaheim Mayor Pro Tem Stephen J. & Susan Faessel • The Foran Family • Todd & Jami Hanson • Carol Hellebrand • Jerry & Carol Jacoby • Willa Joslin & Max Espinoza • Judith Todd & Dan Kee • Bobi Keenan • Raymond L Knapp • Brian Koch & Katie Sanford • Dr. Edward C. Kravitz • Cathy & Tom Kroopf • Lorin Liesy • Morongo Casino Resort and Spa, an enterprise of the Morongo Band of Mission Indians Tribal Gov't • Keith Myers • Mark & Stacy Nagel • Jan Parks • Ronald Rice⁵ • Dennis & Marie Richman • Jim & Becky Riddet • Jeremy & Nicole Schlitt • Stephen & Kathy Coyle Smith • Harold & Marie Steuber • Patricia Tinto • Total Wine & More • Lisa C. & Thomas E. Zaradich, Jr.

\$150+

Chris & Maureen Aitken • The Alonso Family • Anonymous • Lynne Barrette • Frank Barry² • Diane Berliner • Tanya Bilezikjian • Ana Bomgaars • Don Brown • Jacquelynn Burke • Casa Romantica • Rachel Oliveros & Tim Catalano • Eloise Coopersmith • Christine Durham Thorpe • Sara Fairfoot • Gregory Foley • Michael P Ford • Bud & Nancy Foster • Rhona Gewelber • June Glenn • Myrna Hamid • Cindy Hamilton • Harrah's SoCal • Deborah Hastings • Jeff Hellebrand • Cheryl Heller • Bebe Herrera & Masako Tobaru • Christa Iacono • Lola Kelly & John Lloyd Taylor • Louise & Steven Koch⁶ • Glenn Koppel • La Jolla Playhouse • Alan M. Lawson • Vincenta & Hoyle Leigh • Jessica Erin Martin • Rosalia & Robert Mattern • Shirley McCracken • Miguel's Jr • Shoshana Milgram Knapp • Ryan Miller & Cascadia Theatre Company • Carol and Karl Miura • Yasuko Morihara • Orange County Soccer Club • Shannyn Page • Marshall & Kellie Paillet • Art Partridge • Monika Peña & Aaron McGee • Crystal Phillips • Jazmin Pollinger • Richard & Suzanne Priebe • Tricia Schooping • Laurene Schulze • Michael & Peggy Sloan • South Coast Repertory • Bill & Rosalynn Strongin • Londale Theus Jr. • Evangeline Thomson • Anaheim City Council Member Avelino Valencia • Karen Webster • Bruce Wilkinson • Amanda Zarr • Beth Ziemacki

Memorials

¹ In memory of Courtney Greenough
² In memory of Sister Barbara Murphy
³ In memory of Henry Ong

⁴ In memory of Karen Webster
⁵ In memory of Marilyn Rice
⁶ In memory of Diane Lundberg

Honorariums

⁷ In honor of Jennifer Ruckman

PROGRAM FUND DONORS

We can't thank these sponsors enough for providing vital support to our artists and programs. While they receive one-of-a-kind VIP access, we can never thank them enough for their genuine generosity.

2022 Producers Circle

Bette & Wylie Aitken

The Family of Mary Kay Fyda-Mar

Robert Berman • Sophie & Larry Cripe • Elizabeth Jones • Rachelle Menaker & Eddie Schuller • Linda & Tod White

Susan Bowman & Freddie Greenfield • Rachelle Menaker & Eddie Schuller • Laurie Smits Staude

Education & Outreach Fund

Katheryn Baker & Brad Feldman • Orange County Community Foundation • Marc Chessen Scholarship Fund

Robin Preiss Glasser & Robert Berman • Orange County Asperger's Support Group • Linda & Tod White

Bette & Wylie Aitken • Anaheim Community Foundation • Kiwanis Club of Greater Anaheim • Molly Mahoney & John Dominguez • Todd & Rachel Martinez

Susan Bowman & Freddie Greenfield • Bruce Goodrich

OTR New Works Fund

Capital Group Companies Charitable Foundation • National Endowment for the Arts • Jennifer Ruckman & Ken Favell

The Elizabeth George Foundation

Rachelle Menaker & Eddie Schuller

Artist Fund

Bruce Goodrich

Andy & Judith Lamb • Molly Mahoney & John Dominguez • Rachelle Menaker & Eddie Schuller

Bette & Wylie Aitken • Vicky Blake • Alan Corcoran • Sophie & Larry Cripe • Dr. Edward C. Kravitz • David & Danice Limberg

PRODUCTION SPONSORS

EXECUTIVE PRODUCERS

LINDA & TOD WHITE

We've been attending plays since one of our first dates more than 60 years ago. We not only like attending plays, we appreciate the entire process of creating a play—the how and why of a playwright, a director, an actor, and all the others involved in turning an idea into a reality on stage. The Chance gives us the opportunity as Executive Producers to go behind the curtain to learn so much about the creative process. Being an Executive Producer is both inspiring and a lot of fun. We have been Executive Producers for multiple other shows here. We love living on the bay in Newport. Linda grew up in Long Beach, Tod on Balboa Island. We met at Long Beach State, moved to Minneapolis for 4 winters, then to Princeton, NJ for 30 years before moving back to Newport 26 years ago. Linda is a painter. We both are tennis players, sailors and actively support a variety of non-profit organizations.

ASSOCIATE PRODUCERS

SUSAN BOWMAN & FREDDIE GREENFIELD

LAURIE SMITS STAUDE

2022 SEASON SPONSORS

SEASON PRODUCERS

BETTE & WYLIE AITKEN

Bette is a community, civic and arts leader, recently featured in the Orange County Business Journal's Giving Guide as one of the Top Philanthropists in Orange County. Bette first happened upon Chance Theater a few years ago and has been at the forefront of its growth and expansion ever since, and now is serving on its board. In January of 2014, Chance Theater became part of the Bette Aitken theater arts Center. Wylie, better known as Bette's husband, is a nationally recognized civil trial lawyer and founding partner of the firm Aitken Aitken Cohn in Santa Ana, representing individuals and companies harmed by the bad conduct of others. An avid supporter of the arts, he was a past chairman of the State of California's Arts Council and serves on various theater and film boards and chair emeritus of Chapman University's Board of Trustees. By supporting the 2021 Season, Anaheim residents Wylie and Bette, joined by their daughter Ashleigh Aitken, are excited to contribute to the growing impact Chance Theater makes in the community at large both in Anaheim and all over Southern California and beyond.

ASSOCIATE SEASON PRODUCERS

THE FAMILY OF MARY KAY FYDA-MAR

CAPITAL CAMPAIGN DONORS

The following friends were instrumental in us moving into our "Bold New Home" at the Bette Aitken *theater arts* Center. We wouldn't be here without them!

Naming Donors

Bette & Wylie Aitken

Sophie & Larry Cripe • Linda & Tod White • Mary Kay Fyda-Mar

Yvonne & Damien Jordan • Scott & Sandra Graham

Founding Artists • Chance Resident Artists • Dr. Michael & Jean Abdalla • Robert Berman & Robin Preiss Glasser • Lily M. Fan • FoundationAC • Camille Goulet • Bradley Kaye • David & Danice Limberg • Sammy Pierce • Eddie Schuller & Rachelle Menaker • Scott & Georgia Well

Premium Chair Donors

Argyros Family Foundation • Martin & Wendy Benson • Victor & Marnie Ceporius • David Emmes & Paula Tomei • Gail & Ernie Doe • Lynn Gold & Karen "Jade" Martner • Wendy Hooper • Fred Kinney • Pamela J. Lorenz, CFP • Manny & Betsy Porto • Frances Riggs • Eddie Schuller & Rachelle Menaker • Laurie Smits Staude • Zeinab H. Dabbah & Daniel Temianka

Priority Chair Donors

AJIS Lamb • Chapman University • Susan Carol Carpenter • Susie Dittmar • Kathy & Bahram Esfahani • Stephen & Susan Faessel • Michael Garcia & Burt Vosburgh • The Hamman Family • Jeffrey Hellebrand • Patti Howard & Carol Hellebrand • Nancy Johnson • Elizabeth Jones • Dan Kee & Judy Todd • Joanne & Dennis Keith • In Honor of Don Laffoon & Grace Songolo • James & Marsha Lindsey (2) • Casey Long • Tommy & Madeleine Long (2) • Jolynn & Pat Mahoney • Christina Mar • In Memory of Judy Martin • Marc Masterson • Bryan McCormick & Gary Kuwahara (2) • In memory of David McCormick • Bill & Jane McDonald • Drs. Pauline Merry & John Goodman • Dr. and Mrs. Eberhard S. Neutz • Oanh Nguyen & Erika C. Miller (2) • Pacific Western Bank (2) • Muriel Pollia Foundation (2) • Ron & Marilyn Rice • Michelle & Terry Schomburg • Leonard & Susan Silberman (2) • Karen Smits • Tom & Julie Tait • The Well Family • In Memory of Howard Well • Tod & Linda White (2) • Lisa C. & Thomas E. Zaradich

Contributors

Anonymous • AT&T Pioneers • The Boeing Company • Alan & Theresa Corcoran • John Lane • Guy W. Marr • Irina Morris • John & Margi Murray •

Rey O'Day • Marshall Paillet & Kellie Spill • Herb & Jan Parks • Fran & Leonard Rich

In-Kind Donors

City of Anaheim • John Dominguez • Roger Parkman • Ken & Kristi Wilcox • KC Wilkerson

MAKE THEM HEAR YOU DONORS

Thank you to the following Chance friends for supporting us while the theater was shut down. Their vital support helped ensure the continued impact of live theater in our community during those 16 months and for the months to come.

Bette & Wylie Aitken

Rachelle Menaker & Eddie Schuller • Linda & Tod White

Anonymous • Sophie & Larry Cripe • Frome Investments • Guy W. Marr • Laurie Smits Staude

Ashleigh Aitken & Michael Penn • Susan Bowman & Freddie Greenfield • Jason & Alisa Duffey • Bradley Feldman • The Family of Mary Kay Fyda-Mar • Rachel & Todd Martinez

Katheryn Baker • Martin & Wendy Benson • Deutsche Bank Americas Foundation • Robin Preiss Glasser & Robert Berman • Ms. Linda P. Maggard, in honor of Chris Diem • Miracle Foundation Fund • Maria Rigatti & Dick Roberts

Jean Abdalla • Thomas & Susan Alexander • American Theatre Wing • Diane & Chimo Arnold • Bank of Southern California • James M. Beall • Jocelyn A. & Kirk Brown • The Capital Group Companies Charitable Foundation • The Caplin Foundation • Jean Firstenberg • Roger Friedman • GFS, Inc • Bruce Goodrich • Barbara & Gary Gray • Veronica Gray & Robert Daily • Dr & Mrs Rob & Audrey Greenfield • Cynthia Hamilton • Elizabeth Jones • David & Judy Joss • Lisa Keating • Rachel Knapp • Stalky & Judy Lehman • David & Danice Limberg • Tommy & Maddy Long • Doris Longmead • Molly Mahoney & John Dominguez • Margi & John Murray • Mark & Stacy Nagel • Crystal Phillips • MJ Poptanich • Network for Good • Dennis & Marie Richman • Frances Riggs • Monika & Michael Sargent • Terry & Michelle Schomburg • Karen Smits • Steven & Christina Sumpter • Theatre Communications Group • Gabrielle & Matthew Tresler • Robin Walton - In memory of Courtney Greenough • WESCOM Foundation • Rosalind Wyman • Joey Zarr

Brent & Jeanne Adams • Maureen and Chris Aitken • James and Carol Alexander • Anonymous • Frank Barry • Lori & Harley Bassman • Bilha & Michael Bender • Tanya Bilezikjian • Matthew Black - In Memory of Henry Ong • Erika Bleszinski • Tasha & Kyle Brown • Jocelyn Buckner • Janice Caballero • Rachel Oliveros Catalano & Tim Catalano • Chevron Humankind • Alan & Theresa Corcoran • Richard and Linda Davalos • Joseph Devlin • Sheila Diskin & Michael Berman • Eric Eberwein • Kathy & Bahram Esfahani • Diana J. Ewing • Jennifer & Robert Foran • Mandy Foster • Eve Fudge • Virginia & James Gardner • David Golbeck • Scott & Sandra Graham • John Goodman & Pauline Merry • Camille Goulet • In Memory of Courtney Greenough • Georgann Gunness • Todd & Jami Lou Hanson • Andrea Heilman • Carol Hellebrand

• Paul & Joan Herrick • James & Karen Hill • Vickie & William Hite • Soline Holmes • Megana Hosein • Nora Jacob • Yvonne & Damien Jordan • Nick Kremer & Susan Jundanian • Bobi Keenan • Lola Kelly • Raymond Knapp • Brian Koch and Katie Sanford • Terry Koenig • Glenn Koppel • Stacey Kraemer • Keith and Pat Kusunis • Cynthia & Stephen LaMotte • Dorothy Larson • Gavin Lattimer • James & Marsha Lindsey • Pamela Lorenz • Michael Makowski • Kathie & Bill Malcomb • In honor of Louis & Juniper Martinez • Gretchen & Michael Mavrovouniotis • Elizabeth & Keith McDonald • Frank Minano • Julien Minard • Linda Moffitt • Thanh Nguyen • Dennis O'Connell & Elizabeth Jones • Karen O'Hanlon & Nick DiPatrizio • Shannyn Page • Caroline & David Paltin • Pandorra Productions • Andrew Parvey • Marie Perez • Sammy Pierce • Allen & Janet Piwonka • Joe & Esther Rank • Anna Ratajski • Christina & Tim Rice • Bonnie Richmond • Scott & Kelly Roberts • Jonathan Rose • Barbara Rosen • Richard & Karen Rosenberg • Matt Scarpino & Kari Hayter • David Seiden • Michael & Peggy Sloan • Lynette Smith • Patti Stovall • Arthur Strauss • Bill & Rosalynn Strongin • Matt Takahashi & Laura M. Hathaway • The Tan Family • Judith Todd & Dan Kee • Melaura Tomaino • Christopher Trela • Karen Webster • Nancy & Scott Witlin • Roy Wojahn • Howard & Jane Yata • Jordan R. Young • Laura & Will Young • Lisa C. & Thomas E. Zaradich, Jr. • Carole & Stanley Zelingor

Rebecca Allen • Teri Allen • Jack Arroues • Arlene V Braithwaite • Patricia M. Butler • John Daniel Campbell • Kristin Campbell • Kelly Cecutti • Joe & Barbara Chamberlain • Kristianne Clarke • Eloise Coopersmith • Byron Culp • Elina De Santos • Laurie & Jean Decuyper • Michael Distefano • Kay Dobbartin • Isaac Durand • Jill Elsemore • Marsha & John Embree • The Engle Family • Cynthia Espinoza • Stephen & Susan Faessel • Craig Fleming • John Gibson • Geoffrey Gread • Ruth Ellen Grimes • Breath of Fire • Patricia G. Hansmeyer • Ron Hastings • Janice Henderson • Martin Hernandez • Kelly Hewitt • Edward Heyman • Megan Hill • Kim Hille • Elizabeth Holloman • Wayne A Hundley • Joe Impellizeri • Jane Ishibashi • Olivia & Alec Johnson • Jonathan Josephson & Katy Muzikar • Bradley Kaye • Joanne & Dennis Keith • Chris Kim & Jeannine Torres • Steven Kitzman • Katie Kruse • Sheri Kuperhand • Carol Kurland • John Lane • Betty Ann & John Lawson • Marilyn Leuer • Nicki Lopez • Yukiko & Keith Loritz • Janice Lysiak • Raymond Ma • Pauline Maranian • Steve Marvel • Marya Mazar • Jenny McCormick • Shirley McCracken • Lillian Nader • Bob & Terri Niccum • Lisa Nyberg • Michael R. Oppenheim • Donna and Kurt Parfitt • Charles & Maureen Peltzer • Daniel & Vandana Powers • Daniel & Megan Pritchard • Frances Prizzia • Santo Puzzo & Carol Frank • Mindy Reichert • Betty Jean Reinard • Michelle Reinhardt • Kameel Renner • Ronald & Merle Rice • Janet Riggs • Patricia Smeets Rossmesl • Michael Salimbeni • Laurene Schulze • Paul Schumaker • John Sechini • Frances Segal • Bobbe L. Seitz • Teresa Sforza • Kris Shearman • Don Laffoon & Grace Songolo • Kathleen Takahashi • Evangeline Thomson • Scott & Georgia Well • Doreen K. Wiley • Jeri Wilson • Suzanne Wiser



Next to Normal Associate Producers Freddie Greenfield & Susan Bowman, star Jocelyn A. Brown, and Executive Producers Linda & Tod White. Photo by Casey Long.

ENCORE LEGACY CIRCLE DONORS

We're so grateful to these Circle Members who have committed to supporting Chance Theater for generations to come by making a Deferred Gift to a special endowment fund. The interest generated will directly support artists, students, and our community.

Diane & Chimo Arnold • Martin & Wendy Benson • Susan Bowman & Freddie Greenfield • Robert E. Campbell • Donna Chessen • Sophie & Larry Cripe • Bruce Goodrich • Camille Goulet • Nancy Johnson • Elizabeth Jones • Lisa J. Keating • Andrew & Judith Lamb Family Trust • David & Danice Limberg • Rachelle Menaker & Eddie Schuller • Fran Riggs • Terry & Michelle Schomburg • Laurie Smits Staude • Norbert Tan • Scott & Georgia Well • Linda & Tod White

LAND ACKNOWLEDGMENT

We recognize that Chance Theater sits on the traditional lands of the Tongva, Kizh, and Acjachemen people. Although for over 200 years Native Nations have been forcibly removed from this territory, we must acknowledge that this land continues to be a site of gathering and healing for more than 30 Tribal Nations and remains home to over 300,000 tribal members in the state of California.

Here are some websites for more information:

- Native-land.ca/
- nativegov.org/a-guide-to-indigenous-land-acknowledgment

CHANCE

THEATER @ Bette Aitken theater arts Center

MISSION

Our mission is to contribute to a more connected, compassionate, and creative community.

Chance Theater is dedicated to the creation of exciting theatrical experiences, taking artistic risks, and collaborating with gifted and diverse artists on passionate and provocative plays and musicals.

We accomplish our mission by:

- producing powerful, socially-conscious, provocative, intimate theater experiences
- generating participation and dialogue between our diverse communities
- nurturing and supporting local artists
- inspiring and empowering creative young minds
- promoting anti-racist and anti-oppression practices to ensure equity, diversity, and inclusion

RECENT HONORS / AWARDS

Named official "Resident Theater of Anaheim" by Mayor and City Council
Recipient of American Theatre Wing's 2016 National Theatre Company Grant
Recipient of National Endowment of the Arts (NEA) Grant
Two "Outstanding Arts Organization" Awards from Arts Orange County
Winner of 2021 Ovation Award for Best Musical - Intimate Theatre (*Fun Home*)
Winner of 7 additional Ovation Awards, including 3 for Best Musical, and 40 nominations
Winner of 5 LADCC Awards, including Polly Warfield Award for Excellence for Outstanding Season
OC Weekly's Best of OC - Best Musical -- *Lizzie* (2019) and *Parade* (2017)
15 LADCC Award nominations

STAFF

Oanh Nguyen, Executive Artistic Director
Casey Long, Managing Director
Erika C. Miller, Development Director
Masako Tobaru, Technical Director
Bebe Herrera, Production Manager
Teodora Ramos-Fantone, Master Carpenter
Jeff Hellebrand, Box Office Associate
Jocelyn A. Brown, Associate Artistic Director
James Michael McHale, Literary Manager
Nicole Schlitt, Company Manager
Karen O'Hanlon, Education & Community Programs Director
Darryl B. Hovis, TYA Producing Associate
Marc Sanford, Associate House Manager

BOARD OF DIRECTORS

Elizabeth Jones, Chair
Bruce Goodrich, Vice-Chair
Andy Lamb, Treasurer
Larry Cripe, Secretary
Rachelle Menaker, Immediate Past Chair
Bette Aitken, Guy W. Marr
Martin Benson, Oanh Nguyen
Susan Bowman, Terry Schomburg
Freddie Greenfield, Laurie Smits Staude
Rachel Knapp, Lisa C. Zaradich
Casey Long, Mary Kay Fyda-Mar, member emeritus

RESIDENT ARTISTS

Jocelyn A. Brown, council	Teodora Ramos-Fantone, council	Wade Williamson
Jocelyn L. Buckner, council	Marc Sanford, council	Amanda Zarr
Laura M. Hathaway, council	Nicole Schlitt, council	Alex Bueno, legacy
Jeff Hellebrand, council	Masako Tobaru, council	Jennifer Ruckman, legacy
Bebe Herrera, council	Miguel Cardenas	Kelly Todd, legacy
Casey Long, council	Christopher Diem	Courtney Greenough, emeritus
Robyn Manion, council	Cynthia Espinoza	David McCormick, emeritus
James Michael McHale, council	Robert Foran	Myrna Niles, emeritus
Erika C. Miller, council	Megan Hill	Karen Webster, emeritus
Oanh Nguyen, council	Darryl B. Hovis	
Karen O'Hanlon, council	Matt Takahashi	

CHANCE FELLOWS

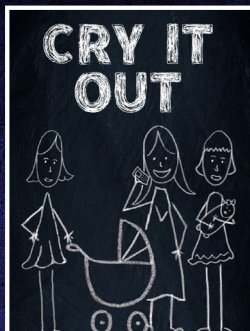
Georgia Leigh Davis	Glenn Koppel	Robin Walton
Ben Green	Shannyn Page	

Subscribe Today

FULL CONTACT THEATER IN 2022

SUBSCRIPTION
SERIES

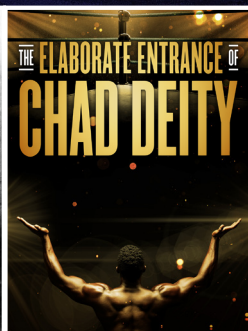
HOLIDAY
SERIES



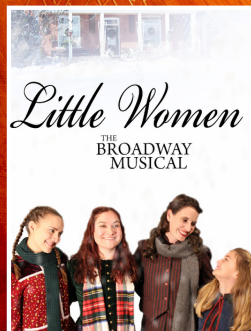
APR 1 - MAY 1



JUL 15 - AUG 14



SEP 23 - OCT 23



NOV 25 - DEC 23

SEE ALL 4 SHOWS
PACKAGES START AT \$99

STOP AT THE BOX OFFICE
BEFORE YOU LEAVE

MORE LOCAL THEATRE

CAMINO REAL PLAYHOUSE, San Juan Capistrano, www.caminorealplayhouse.org

BLITHE SPIRIT (February 4 - 20)

THE CURIOUS INCIDENT OF THE DOG IN THE NIGHT (Feb. 25 - Mar. 13)

CHANCE THEATER, Anaheim, www.chancetheater.com

NEXT TO NORMAL, (January 28 - February 27)

P3 THEATRE COMPANY, Hermosa Beach (2nd Story Theater), www.p3theatre.biz

LOVE, VALOUR, COMPASSION (February 25 - March 6th)

SOUTH COAST REPERTORY, Santa Ana, www.scr.org

WHAT I LEARNED IN PARIS (February 12 - March 12)

NO CURRENT SHOWS. VISIT WEBSITE FOR MORE INFORMATION

ALCHEMY THEATRE COMPANY, www.alchemytheatre.com

AMERICAN COAST THEATER, Costa Mesa, www.americancoasttheater.org

THE ATTIC COMMUNITY THEATRE, www.ocact.com

BOLD THEATRE, www.boldtheatre.org

COSTA MESA PLAYHOUSE, www.costamesaplayhouse.co

CURTIS THEATRE, www.curtistheatre.com

LAGUNA PLAYHOUSE, www.lagunaplayhouse.com

LONG BEACH LANDMARK, www.lblandmark.org

OC-CENTRIC, www.oc-centric.com

MAVERICK THEATER, www.mavericktheater.com

PROJECT LA FEMME, www.projectlafemme.com

UNNAMED THEATRE COMPANY, www.unnamedtheater.com

STAGEStheatre, www.stagesoc.org

THE WAYWARD ARTIST, www.thewaywardartist.org



*Nurturing, supporting, and promoting
live theatre in Greater Orange County*

www.octheatreguild.org